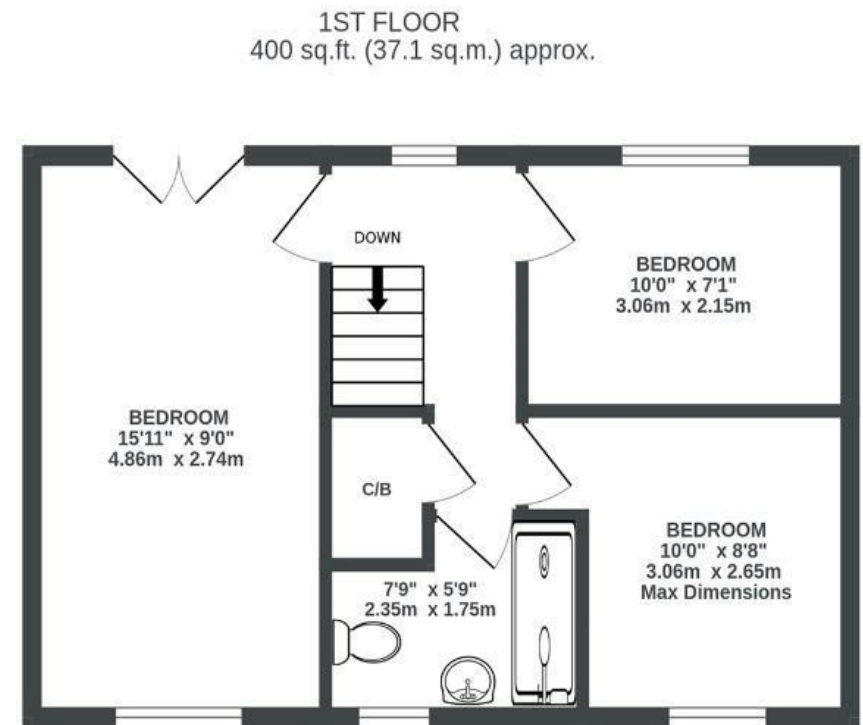
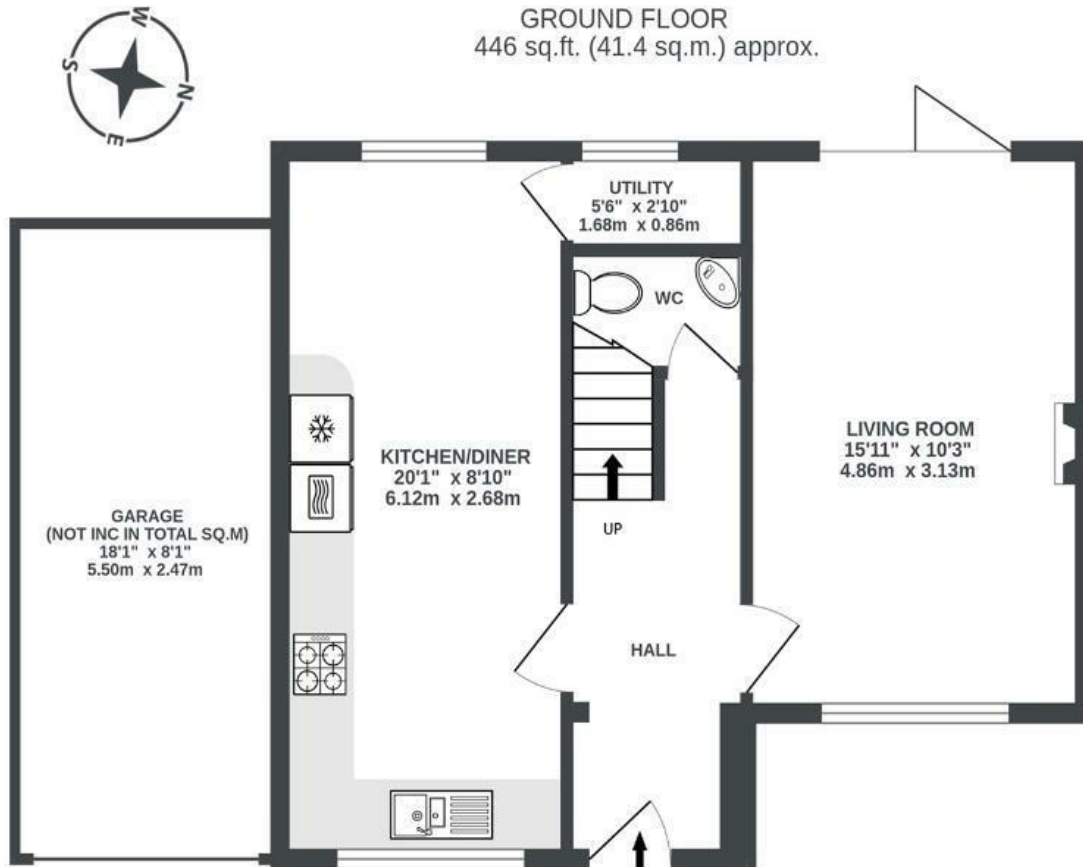


Avon Close

ST GEORGE

APPROXIMATE FLOOR AREA
78.5 SQM / 845 SQFT



Illustrations are for reference purposes only, measurements are approximate, not to scale.

Boardwalk

Avon Close

ST. GEORGE, BRISTOL

£

£415,000

zzz

3 Bedrooms



Bristol, BS5

8DF



1 Bathrooms

"The house backs onto the River Avon and the river path. It's a beautiful spot, with the decking at the back of the house facing southwest and enjoying sunshine through the evening. It's wonderful to sit out and watch the world drift by."

